

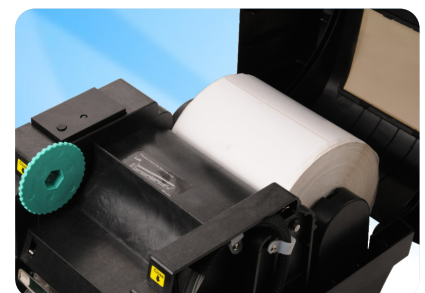
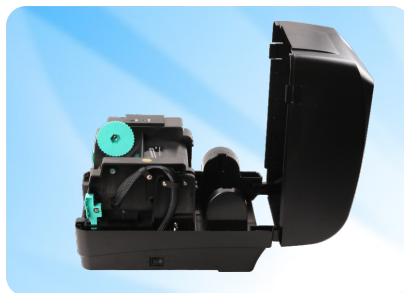
# Xprinter®



Thermal Transfer/ Direct Thermal

## XP-H500B / H500E

- Dual-motor gear driven design  
127 mm (5") inches per second print speed
- 300 meter (984') ribbon supply on a 25.4 mm (1") core (coated side out)
- USB 2.0
- Print mechanism for kiosk application
- 200 MHz 32-bit RISC processor with 8 MB SDRAM, 4 MB Flash memory
- TSPL-EZ™ firmware emulates TPLE and TPLZ languages out of the box
- Free bundled labeling software and Windows drivers



# XP-H500B / H500E

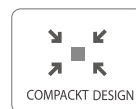
Thermal Transfer/ Direct Thermal



BARCODE



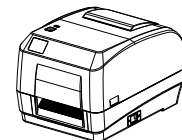
VARIOUS INTERFACE



COMPACT DESIGN



HIGH SPEED



Printing Features		XP-H500B	XP-H500E
Resolution		203 DPI	300 DPI
Print method	Thermal Transfer / Direct Thermal		
Max.Print speed		127 mm (5") / s	101.6 mm (4") / s
Max.print width		108 mm (4.25")	104 mm (4.09")
Max.print length		2286 mm (90")	1016 mm (40")
Media			
Media type	Continuous, gap, black mark, fan-fold and punched hole		
Media width	25.4-118mm (1.0"-4.6")		
Media thickness	0.06~0.254 mm (2.36~10mil)		
Media core diameter	25.4 ~ 76.2 mm (1" ~ 3")		
Label length		10~2,286mm(0.39"~90")	10 ~ 1016 mm (0.39" ~ 40")
Label roll capacity	127 mm (5") OD (External Diameter)		
Ribbon capacity	Max. 300 m		
Ribbon width	110 mm		
Ribbon core inner diameter	25.4 mm (1")		
Performance Features			
Processor	32-bit CPU		
Memory	4MB Flash Memory, 8MB SDRAM, SD card reader for Flash memory expansion, up to 4 GB		
Interface	Standard: USB+TF card    Optional: Serial/Lan/Parallel/Bluetooth/WIFI		
Sensors	① Gap sensor    ② Cover opening sensor    ③ Black mark sensor    ④ Ribbon sensor		
Fonts/Graphics/Symbologies			
Internal fonts	8 alpha-numeric bitmap fonts, Windows fonts are downloadable from software.		
1D barcode	Code 39, Code 93, Code 128UCC, Code 128 subsets A, B, C, Codabar, Interleaved 2 of 5, EAN-8,EAN-13,EAN-128, UPC-A, UPC-E, EAN and UPC 2(5) digits add-on, MSI, PLESSEY, POSTNET, China POST, GS1 DataBar, Code 11		
2D barcode	PDF-417, Maxicode, DataMatrix, QR code, Aztec		
Rotation	0°、90°、180°、270°		
Emulation	TSPL、EPL、ZPL、DPL		
Physical Features			
Dimension	302.5 mm (D) x 234 mm (W) x 194.8 mm (H)		
Weight	2.6 kg		
Reliability			
Print head life	30 km		
Software			
Driver	Windows / Linux / Mac		
SDK	Windows / Android / iOS		
Power supply			
Input	AC 100-240V 1.8A, 50-60Hz		
Output	DC 24V2.5A 60W		
Options			
Factory Options	① Peeler② Cutter		
Dealer Options	<input checked="" type="checkbox"/> External paper roll holder and 1"paper roll spindle <input checked="" type="checkbox"/> Bluetooth module (RS-232C transmission interface) <input checked="" type="checkbox"/> WIFI module <input checked="" type="checkbox"/> Extension board for external paper roll holder		
Environmental Conditions			
Operation	5 ~ 40°C(41~104°F), Humidity: 25 ~ 85% non-condensing		
Storage environment	-40 ~ 60°C(-40~140°F), Humidity:10 ~ 90% non-condensing		



Scan QR code to checkout Xprinter website for more update information.  
Phone: (+86 756) 3895 852  
Http://www.xprintertech.com  
Email: overseas@xprinter.net



Windows 7



Windows 8



Windows 10

